

lumi

Windows  
Bi-folds  
Lift-Slide Doors  
French Doors  
Composite Doors  
Glazed Doors

Lumi is a pioneering new glazing system. With no raised, mounted frame, Lumi is frameless. It's wall to wall glass, with an impressive suite of energy efficiency credentials. It's everything you know about a window, turned inside out.





A photograph of a modern building with a large glass facade. The glass reflects the surrounding landscape, which includes a green field, a fence, and distant hills under a cloudy sky. The building's structure is visible as dark vertical lines. In the foreground, there are some plants and a stone wall.

Frameless. Lookmore.



**Ground floor** Lift-Slide Door  
**First floor** Windows



Window



Lumi Coloro Door



The weather and the atmosphere – they conspire against us. The north coast of Ireland is an unpredictable place. Rain, wind, cold, sun, sometimes all in one day, sometimes all at once. Lumi is the first window, door, bi-fold and lift-slide glazing system that's designed to cope better for longer.





Bi-fold Door (Aluminium, available in Anthracite Grey, Black & Light Grey)



Bi-fold Door (Aluminium, available in Anthracite Grey, Black & Light Grey)



Lift-Slide Door (Aluminium, available in Anthracite Grey only)



Window



Over the centuries, architecture has captured changes in both aesthetics and attitudes, but in recent years, windows just haven't kept up. Lumi has been designed and engineered to be radically different. Its range of windows, doors, bi-folds and lift-slide doors match both inside and out, but stand out in a sea of commonality.



Window



2 Pane Fully Glazed French Doors (Open Out)



Lumi Fully Glazed French Doors (Open in)



4 Pane Fully Glazed French Doors (Open Out)



'AnTeak' Internal Finish



Window



Lumi Fully Glazed Door (Open in)



Lumi Composite Door LD2



Lumi Composite Door LD5



Lumi Composite Door LD0



'Anthracite Grey Smooth' Internal Finish



# Energy efficiency that lasts.

This is a world that is constantly changing. That's why we didn't want to waste our energy creating another double or triple glazed window. Lumi doesn't just look different, it performs differently too.

A 50mm unit with triple glazed, fully insulated, toughened glass, is supported by a sturdy internal glass-fibre, high density, closed cell structure, that allows for larger than average glazed areas. With no joints, no painted surfaces, no connected materials, there's nothing to maintain, nothing to corrode and no external weak points.

6mm Kitemarked  
low iron extra clear  
toughened glass.

4mm Kitemarked  
toughened glass.

Triple glazed 50mm  
insulated glass unit.

Exterior grade Renolit foil.  
Authentic timber finish with  
no maintenance.

Highly polished edge.

Ceramic colour border.  
Fused in toughening  
furnace at 700°C.

High strength structural  
adhesive.

Edgetech warm edge  
Super Spacer with  
built in energy saving.

Glass-fibre profile.  
Exceptionally strong and  
durable with low thermal  
conductivity.

Double gasket seal  
for excellent thermal  
performance and noise  
reduction.

Double rebate  
stormproof design.

Foam insulation  
for extra energy  
efficiency.







Say hello to **lumi<sub>2</sub>**



Launched in 2015, the Lumi frameless triple glazed window system was widely regarded as the first true innovation in the UK market for many years.

**And now it's also the most flexible with our two NEW product ranges for 2017:**

- Lumi Double Glazed Windows.
- Lumi Double Glazed Sliding Doors.

New for  
2017



### Lumi double glazed windows

This double glazed version of the Lumi award winning glazing system is perfect for the replacement market. With its wall-to-wall glass it looks exactly the same as the Lumi triple glazed version, but is designed to fit perfectly into 70mm PVC replacement projects and is available in the full range of external and internal colours.

The Lumi2 range also includes a double glazed Lift-Slide door which has the same flush glazing finish as the triple glazed version and is available in the full Lumi colour range.



### Lumi double glazed lift-slide doors

This double glazed version of the frameless Lumi lift-slide door system is a stunning addition to any home.

- Wall-to-wall glass.
- Energy efficient lightweight system
- Available up to 6.5m wide x 2.6m high
- Available in the full colour range including white and cream.
- Available in 2 or 4 pane options





Every effort has been made to reproduce the Lumi colours. However, printing constraints will give rise to some colour deviation.

Please note some Lumi products are only available in selected colours.

## External Glass



Anthracite Grey



Light Grey



Slate Blue



Light Blue



Black



Chartwell Green



Red

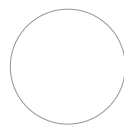


Lumi White

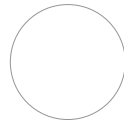


Cream

## External Frame



White Smooth



White Grained



Cream Smooth



Cream Grained



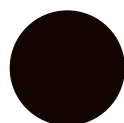
Anthracite Grey Smooth



Anthracite Grey Grained



Black Smooth



Black Grained



Signal Grey Smooth

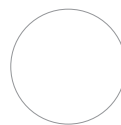


Light Grey Smooth

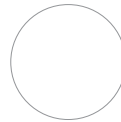


Chartwell Green Grained

## Internal Frame



White Smooth



White Grained



Cream Smooth



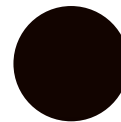
Cream Grained



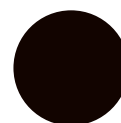
Anthracite Grey Smooth



Anthracite Grey Grained



Black Smooth



Black Grained



Signal Grey Smooth



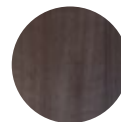
Light Grey Smooth



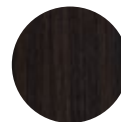
Chartwell Green Grained



AnTeak



Siena



Swamp Oak



Winchester

October 2017

sales@lumiwindows.com

**03300415014** - UK Direct Sales Line

**048256 32200** - ROI sales line, (ask for Lumi internal sales)

**lumiwindows.com**

Lumi reserves the right to make alterations to any of the featured products without prior notice.